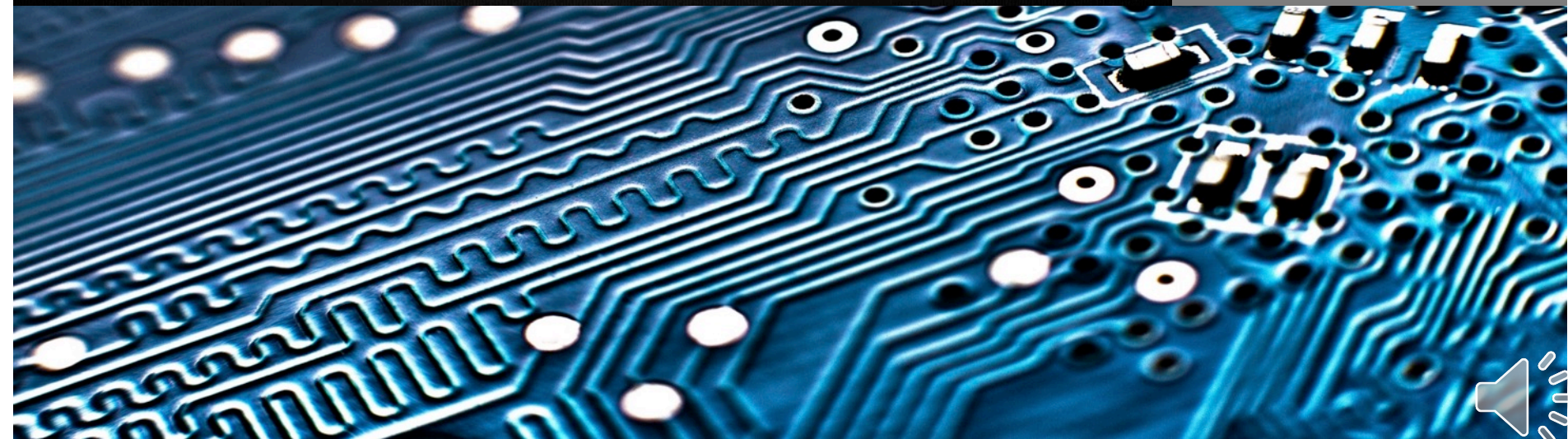
A decorative header featuring several white, paper-cut style clouds of various sizes scattered across a grey gradient background.

 **UNIVERSITY SYSTEM OF GEORGIA**
Information Technology Services

Academic Release Review for Spring MT 20204



Spring Mid-Term Collection (20204)

Key Dates

- February 4, 2020 – Open
- February 11, 2020 - Successful extraction required
- February 21, 2020 – Census I Date
- March 3, 2020 – Certification and Due Date

Items Included in Release

- Academic Release 1.6
 - Campus ETL
- Data Collections ETL 1.3
 - Data Collection Extraction process (ZADMETL)

Items Included in Release

- New Data Elements
- New Validation Rules
- New Valid Values
- Updated Data Element/Validation Rule
- Updated Reports
- Data Element Dictionary Updates

New Data Elements

New Data Elements

- Advanced Standing Hours – Professional Certification (STE102)
- Advanced Standing Hours – Portfolio Review (STE103)
- Advanced Standing Hours – Performance (STE104)
- Advanced Standing Hours – ACE Military Credit: Air Force (STE105)
- Advanced Standing Hours – ACE Military Credit: Army (STE106)

New Data Elements

New Data Elements (continued)

- Advanced Standing Hours – ACE Military Credit: Coast Guard (STE107)
- Advanced Standing Hours – ACE Military Credit: Department of Defense (STE108)
- Advanced Standing Hours – ACE Military Credit: Marine Corps (STE109)
- Advanced Standing Hours – ACE Military Credit: Navy (STE110)

New Validation Rules

New Validation Rules

- VSTE319 – Advanced Hours Accepted – Professional Certification must be between 0 and 100.
- VSTE320 - Advanced Hours Accepted – Portfolio Review must be between 0 and 100.
- VSTE321 - Advanced Hours Accepted – Performance must be between 0 and 100.
- VSTE322 – Advanced Hours Accepted – ACE Military Credit: Air Force must be between 0 and 100.

New Validation Rules

New Validation Rules (continued)

- VSTE323 – Advanced Hours Accepted – ACE
Military Credit: Army must be between 0 and 100.
- VSTE324 – Advanced Hours Accepted – ACE
Military Credit: Coast Guard must be between 0 and 100.
- VSTE325 – Advanced Hours Accepted – ACE
Military Credit: Department of Defense must be between 0 and 100.
- VSTE326 – Advanced Hours Accepted – ACE
Military Credit: Marine Corps must be between 0 and 100.

New Validation Rules

New Validation Rules (continued)

- VSTE327 – Advanced Hours Accepted – ACE
Military Credit: Navy must be between 0 and 100.



New Valid Values

New Valid Values

- 999908 – Credit by Professional Certification
- 999909 – Credit by Portfolio Review
- 999910 – Credit by Performance
- 9999AF – Air Force courses from military transcript or course credit given for active duty assignments through ACE.
- 9999AR – Army courses from military transcript or course credit given for active duty assignments through ACE.

New Valid Values

New Valid Values (continued)

- 9999CG – Coast Guard courses from military transcript or course credit given for active duty assignments through ACE.
- 9999DD – Department of Defense courses from military transcript or course credit given for active duty assignments through ACE.
- 9999MC – Marine Corps courses from military transcript or course credit given for active duty assignments through ACE.

New Valid Values

New Valid Values (continued)

- 9999NA – Navy courses from military transcript or course credit given for active duty assignments through ACE.



Updated Data Element/Validation Rules

Updated Data Element

- Advanced Standing Code (STE085)

Updated Validation Rules

- VSTE265 - Advanced Standing Codes can only be 999901, 999902, 999903, 999904, 999905, 999906, 999908, 999909, 999910, 9999AF, 9999AR, 9999CG, 9999DD, 9999MC, 9999NA.

Updated Data Element/Validation Rules

Updated Validation Rules (continued)

- VSTE156 - For students matriculating prior to Fall 2019, if the Learning Support Requirement Indicator - Math is S or I and the Learning Support Program Current Enrollment Indicator - Math cannot be null.
- VSTE172 - For students matriculating prior to Fall 2019, Learning Support Requirement Indicator - English must be S, I, V, X, or null.

Updated Data Element/Validation Rules

Updated Validation Rules (continued)

- VSTE176 - For students matriculating prior to Fall 2019, if the Learning Support Program Current Enrollment Indicator - MATH is null, the Learning Support Requirement Indicator - MATH must be null

Updated Reports

Updated Reports

- Course Data Submission Summary

INSTITUTION_NAME	SETID	COURSE_ENROLLMENT_IND	CENSUS_STATUS	FUND_GRP	TOTAL	LOWER_LEVEL	UPPER_LEVEL	GRADPROF	MILITARY	NR	UNKNOWN
Test Banner 11G University	98200	CNTENRLY	C1	0	4,572						4,572
		CNTENRLY	C1	1	38,552	32,783	5,769				
		CNTENRLY	C1	2	36,318	20,044	15,698			576	
		CNTENRLY	C1	3	45,018	37,257	7,761				
		CNTENRLY	C1	4	3,941	3,941					
		CNTENRLY	C1	7	96					96	
Research Universities - Total					128,497	94,025	29,228		96	576	4,572
20164 - EOT - Course Enrollment Indicator: CNTENRLY - Census Status: C1 - Total					128,497	94,025	29,228		96	576	4,572

University System of Georgia

Course Data Submission Summary Details

Course Credit Hours - Lower Level Undergraduate Hours

Test Banner 11G University

SETID: 98200

Submission Term: 20164 - EOT - Course Enrollment Indicator: CNTENRLY - Census Status: C1

Collection Type	Drill to All Details	FUND_GRP	Course Sec ID	Student Inst UID	Student Inst ID	Credit HR Ind	Course Att HRS	Course CR HRS	Sec Loc Code	Instru Level	Fund Group	Course CIP Code	Course Name	Course Nbr	Course Acronym	Course Level
EOT	Drill to All Details	1	20010	103515	900083503		3	3	A	21	1	450201	Intro to Anthropology - INTL	1102	ANTH	LOWER
EOT	Drill to All Details	1	20010	118880	900068864		3	3	A	21	1	450201	Intro to Anthropology - INTL	1102	ANTH	LOWER
EOT	Drill to All Details	1	20010	128501	900106463		3	3	A	21	1	450201	Intro to Anthropology - INTL	1102	ANTH	LOWER

Updated Reports

Updated Reports (continued)

- Advanced Standing Reference Code Report

Advanced Standing Code	Transfer FICE Code	Advanced Standing Description	From Term	To Term
ACE	999903	Other Advanced Standing Programs	00000	99999
AMCAF	9999AF	ACE Military Credit: Air Force	20204	99999
AMCAR	9999AR	ACE Military Credit: Army	20204	99999
AMCCG	9999CG	ACE Military Credit: Coast Guard	20204	99999
AMCDD	9999DD	ACE Military Credit: Department of Defense	20204	99999
AMCMC	9999MC	ACE Military Credit: Marine Corps	20204	99999
AMCNA	9999NA	ACE Military Credit: Navy	20204	99999
AP	999901	Advanced Placement Programs	00000	99999
CLEP	999902	College Level Examination Program	00000	99999
DANTES	999904	Other Advanced Standing Programs	00000	99999
IB	999906	International Baccalaureate Diploma Completion Program	00000	99999
LOC	RGTLOC	Local Institution Code	00000	20164
OTHER	999905	Other Advanced Standing Programs	00000	99999
PERFRM	999910	Credit by Performance	20204	99999
PORTRV	999909	Credit by Portfolio Review	20204	99999
PROFCT	999908	Credit by Professional Certification	20204	99999

Data Element Dictionary Updates

Data Element Dictionary Updates

- Advanced Standing Hours – AP (STE001)
 - VSTE028 - Advanced Hours Accepted - AP must be between 0 and 100
- Advanced Standing Hours – CLEP (STE002)
 - VSTE029 - Advanced Hours Accepted - CLEP must be between 0 and 100
- Advanced Standing Hours – ACE (STE003)
 - VSTE030 - Advanced Hours Accepted - ACE must be between 0 and 100

Data Element Dictionary Updates

Data Element Dictionary Updates (continued)

- Advanced Standing Hours – DANTE (STE004)
 - VSTE031 - Advanced Hours Accepted - DANTE must be between 0 and 100
- Advanced Standing Hours – OTHER (STE005)
 - VSTE032 - Advanced Hours Accepted - OTHER must be between 0 and 100
- Advanced Standing Hours – IB (STE006)
 - VSTE033 - Advanced Hours Accepted - IB must be between 0 and 100

Data Element Dictionary Updates

Data Element Dictionary Updates (continued)

- Advanced Standing Code (STE085)
 - VSTE265 - Advanced Standing Codes can only be 999901, 999902, 999903, 999904, 999905, 999906, 999908, 999909, 999910, 9999AF, 9999AR, 9999CG, 9999DD, 9999MC, 9999NA.

Data Element Dictionary Updates

Data Element Dictionary Updates (continued)

- Advanced Standing Hours – AP (STE001)
- Advanced Standing Hours – CLEP (STE002)
- Advanced Standing Hours – ACE (STE003)
- Advanced Standing Hours – DANTES (STE004)
- Advanced Standing Hours – IB (STE006)

Data Element Dictionary Updates

Data Element Dictionary Updates (continued)

- Advanced Standing Code (STE085)

Data Source	Provider	Banner
	Table	SHRTRCE
	Column	SHRTRIT_SBGI_CODE
	GUI Name	Hours

Spring Mid-Term Collection (20204)

Key Dates

- February 4, 2020 – Open
- February 11, 2020 - Successful extraction required
- February 21, 2020 – Census I Date
- March 3, 2020 – Certification and Due Date

Data Collections Site

https://www.usg.edu/georgia_best/application_development_and_support/data_collections

During Beta Testing

- DW_TEST@usg.edu

During the Collection

- Helpdesk@usg.edu



UNIVERSITY SYSTEM OF GEORGIA

Information Technology Services

